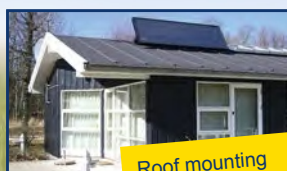


VENTILATION, DEHUMIDIFYING AND HEATING WITH SOLARVENTI®

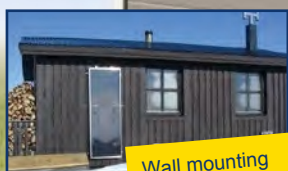
Make use of free solar energy to:

- Dehumidify with fresh dry solar warmed air
- Remove damp, moulds and fungus
- Remove bad odours and improve indoor air quality
- Provide heat

SolarVenti®



Roof mounting



Wall mounting

How a SolarVenti® works

1. The photovoltaic panel built into the Solarventi ® unit automatically starts the fan.
2. Fresh air is sucked in through the small holes in the perforated back plate. The air circulates in the collector and is heated by the sun.
3. Depending on the model, approx. 35 to 200 m³ dry, warm air is blown into the room per hour. The temperature in the injected air is approx. 15 - 40 °C above the outside temperature.
4. Positive pressure drives humid air out of the building through cracks and crevices replacing it with fresh solar warmed dry air.

Advantages:

- Ventilation with free solar energy
- A healthy and fresh indoor climate
- Secure the value of your holiday home and furniture
- Avoid moisture, fungus, mould and odours
- No running costs
- Maintenance-free due to a self-cleaning filter
- Can be DIY fitted
- 5 year warranty
- Get your payback in 2 -5 years
- Manufactured in the EU



SolarVenti® Find the right model

All models are available with alu, white or black frame.

Models	25 m ² room size SV3	50 m ² room size SV7	80 m ² room size SV14	100 m ² room size SV20	150 m ² room size SV30
Maximum floor area	25 m ²	50 m ²	80 m ²	100 m ²	150 m ²
Maximum air flow	35 m ³ / hour	90 m ³ / hour	110 m ³ / hour	140 m ³ / hour	200 m ³ / hour
Estimated time of air change	approx. 2 hours				
Estimated maximum energy supply / year	200 kWh	434 kWh	924 kWh	1.340 kWh	2.100 kWh
L x W x D / mm	704 x 524 x 55	1004 x 704 x 55	1974 x 704 x 55	1974 x 1004 x 55	3000 x 1020 x 75
Weight / KG	5,5	8,0	14,0	15,0	29,0
Regulation	on/off switch only	on/off switch or regulator	on/off switch or regulator	on/off switch or regulator	on/off switch or regulator

Control systems: There are two control systems:

- Manual on/off switch
- Thermostatically controlled regulator

Installation: A south or SE or SW facing site with minimal shade is ideal. Solarventi® can be wall mounted flat or angled to face the sun using wall brackets or can be roof mounted using the roof mounting kit. Mounting instructions are delivered with each Solarventi ® model for "DIY" installation.

If you would like professional help please contact us.

Dealer info:
Sarl Ecopower
16200 Foussignac, France

